

PRODUCT DESCRIPTION (ACG-AltLED7)
Electrical Properties

| | |
|-------------------------|--|
| Total power consumption | 110 watts |
| Operating voltage | 24-28V DC |
| Cable length | 1.0 meter |
| Connection | Will be connected to screw terminals of power supply |
| Power supply to be used | 24V DC 5A, 120W (industrial) |

Electronic Properties

| | |
|------------------------------------|-----------------------------------|
| Constant current driver efficiency | %93 (24V DC) |
| Switching frequency | 450kHz (24V DC) |
| Reverse polarity protection | Yes |
| Low voltage shut-down | Yes |
| LED type | Philips Lumileds, Luxeon Rebel |
| # of LEDs | 42 |
| Product life | >50.000 hours |

Physical Properties

| | |
|---------------|--------|
| Weight | 5.1 kg |
| IP protection | IP50 |

Thermal Properties

| | |
|---|------------------|
| Body temperature | 45 °C |
| Thermal conduction capacity (each module) | < 5 °C/W |
| Environment temperature | (-40) – (+50) °C |

Optical Properties

| | |
|---------------------------------|---|
| Lens efficiency | %90 |
| Total light angle | 60° |
| Average color temperature (CCT) | 6500 K |
| Light output | at the beginning of operation: 8160 lumens |
| | steady state: 7100 lumens |

Certification

| | |
|-------------------|----------------------|
| Patent no | 2009/09847 (Turkey) |
| CE certificate no | CGZ2100312-0155-E-R1 |

PRODUCT DESCRIPTION (ACG-AItiLED4)
Electrical Properties

| | |
|-------------------------|--|
| Total power consumption | 60 watts |
| Operating voltage | 24-28V DC |
| Cable length | 1.0 meter |
| Connection | Will be connected to screw terminals of power supply |
| Power supply to be used | 24V DC 3.2A, 75W |

Electronic Properties

| | |
|------------------------------------|--------------------------------|
| Constant current driver efficiency | %93 (24V DC) |
| Switching frequency | 450kHz (24V DC) |
| Reverse polarity protection | Yes |
| Low voltage shut-down | Yes |
| LED type | Philips Lumileds, Luxeon Rebel |
| # of LEDs | 24 |
| Product life | >50.000 hours |

Physical Properties

| | |
|---------------|--------|
| Weight | 3.0 kg |
| IP protection | IP50 |

Thermal Properties

| | |
|---|------------------|
| Body temperature | 45 °C |
| Thermal conduction capacity (each module) | < 5 °C/W |
| Environment temperature | (-40) – (+50) °C |

Optical Properties

| | |
|---------------------------------|---|
| Lens efficiency | %90 |
| Total light angle | 60° |
| Average color temperature (CCT) | 6500 K |
| Light output | at the beginning of operation: 4660 lumens |
| | steady state: 4050 lumens |

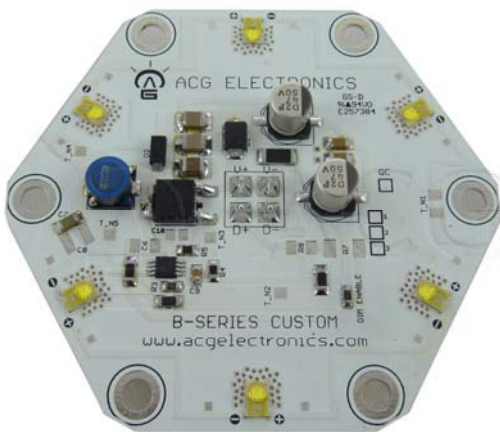
Certification

| | |
|-------------------|----------------------|
| Patent no | 2009/09847 (Turkey) |
| CE certificate no | CGZ2100312-0155-E-R1 |

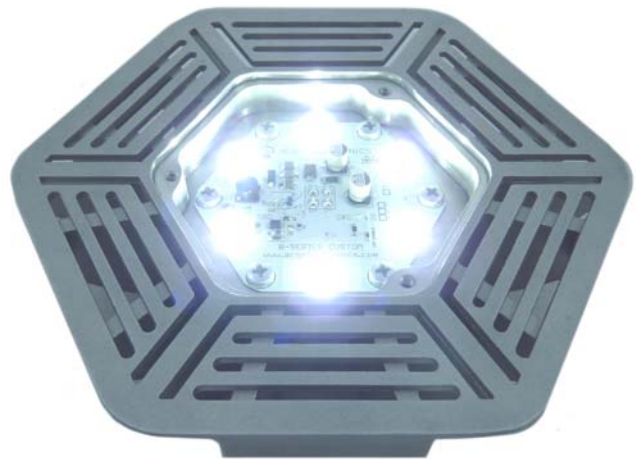
ELECTRONIC DESIGN

On-board constant current driver

Each aluminum unit of AltiLED has a LED module inside. On those LED modules there is a B-Series constant current driver developed by ACG Electronics. This driver ensures the LED current is constant, independent of the input voltage. Since most of the electronic properties of LEDs are changing during operation, constant current drivers are recommended by all LED manufacturers.



*LED module with ACG B-Series
constant current driver on-board*



AltiLED aluminum unit

Other features of the driver:

Reverse polarity protection

(to prevent device failures due to misconnection of + and – voltage inputs)

Low EMI/RFI level

(CE certified)

Industry leading driver efficiency (>%93)

High lifespan, high efficiency LEDs and electronic components

(Philips Lumileds Luxeon Rebel LED 185 lumens@700mA)

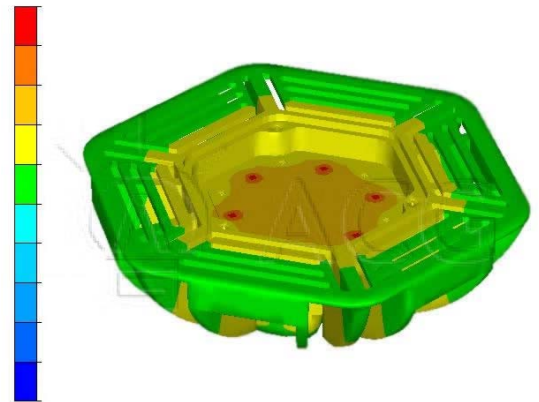
THERMAL DESIGN

- **Aluminum body with high thermal conduction capacity**

The body of the fixture is produced from a high thermal conductivity aluminum. Overall thermal resistance is lower than 5 °C/W .

- **Computer aided thermal analysis**

The body temperature and LED junction temperature is calculated using computer software at the design stage.



- **Low LED temperature and high product life**

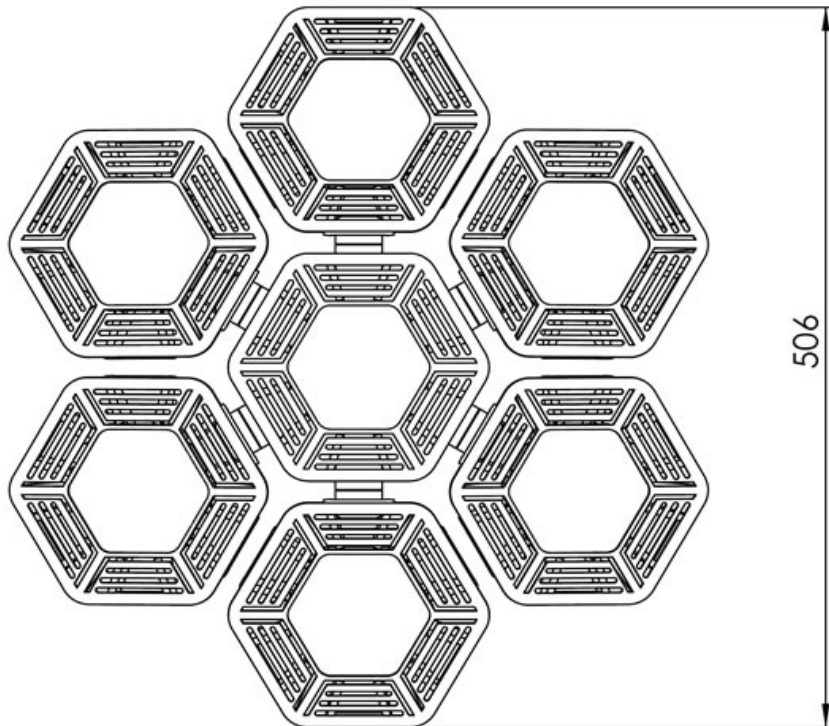
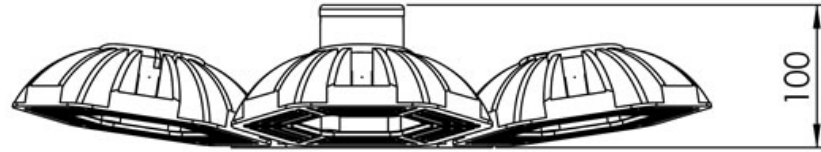
Lifetime of LED lighting fixtures are closely related with LED temperature. Over 50.000 hours of product life is expected.

OPTICAL DESIGN

- Custom design lens with 90% efficiency

A custom design lens is used in AltiLED to provide higher light usage and even lighting distribution.



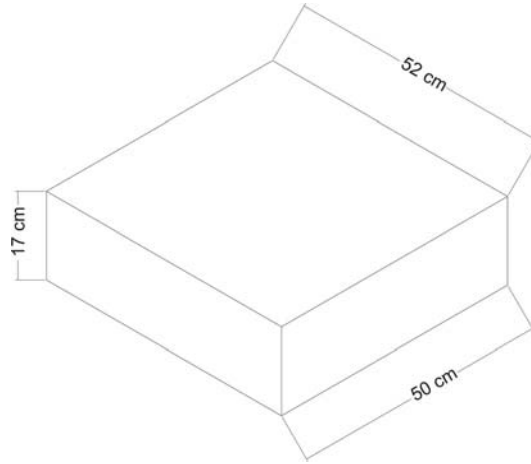
DIMENSIONS

| | |
|-------------|------------------|
| PART NAME: | ACG-AItiLED |
| DIMENSIONS: | millimeters (mm) |

PACKAGING

PACKAGE DIMENSIONS : 52 x 50 x 17 cm

PACKAGED WEIGHT : 6.2 kg (AltiLED7), 4.1 kg (AltiLED4)



PALLET DIMENSIONS: 110 x 110 x 225 cm (+5cm tolerance in height)

Each pallet contains 48 products.

